

Lambton Road  
West Wimbledon, SW20 0LW

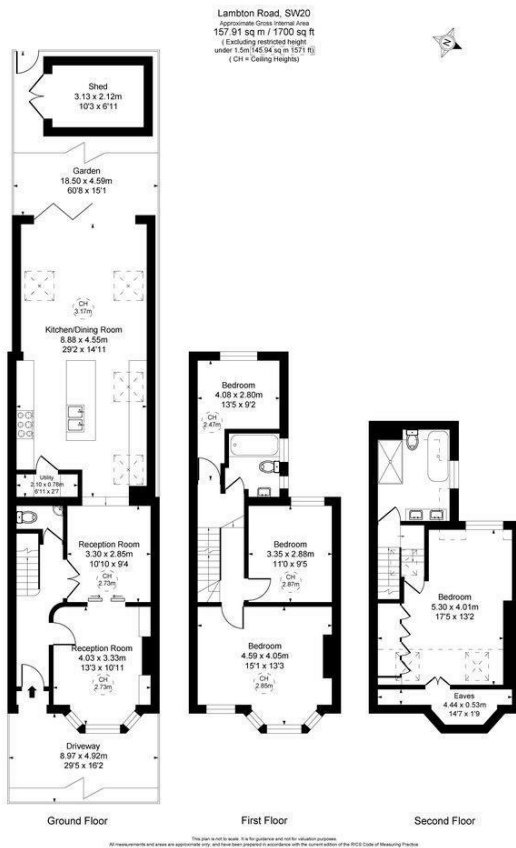
£1,800,000 Freehold



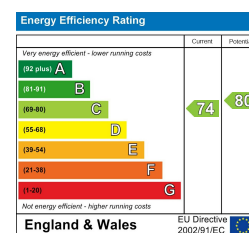
Located on the sought-after Lambton Road in the heart of West Wimbledon, this beautifully presented **FOUR BEDROOM, TWO BATHROOM** Victorian terraced home blends period charm with stylish modern living. Featuring a gorgeous brick façade and private driveway, the property has been thoughtfully extended and finished to a high standard throughout.

The ground floor offers a welcoming entrance hall with downstairs W.C., two elegant reception rooms with plantation shutters and a wood-burning fireplace, and a stunning extended kitchen/dining/family room with quartz worktops, central island, utility room, and bifolding doors opening onto the beautiful west-facing garden with rear access. Upstairs are four generous bedrooms and two contemporary bathrooms, providing flexible accommodation ideal for family living or working from home.

Ideally located close to Raynes Park Station, Hollymount Primary School, local cafés, shops, restaurants, and green open spaces, this exceptional home offers superb family living in one of West Wimbledon's most desirable locations.



- Exceptional Four Bedroom - Two Bathroom
- Victorian Brick-Fronted House
- Off Street Parking - West Facing Garden
- Stunning Apex Roof Extended Kitchen/Dining/Family Room
- Bifolding Doors, Utility Room, Downstairs W.C
- 0.1 Miles To Raynes Park High Street And Station
- Close To Hollymount Primary School
- Wood Burning Fire - Plantation Shutters
- EPC - C
- Council Tax Band - F



For Free Mortgage Quote and Best Mortgage Rates, call Ellisons Mortgage Advisor on 0208 944 9595



Although these particulars are believed to be correct, their accuracy is not guaranteed and they do not form part of any contract.

Celebrating 30 years of successful Sales and Lettings in Merton

